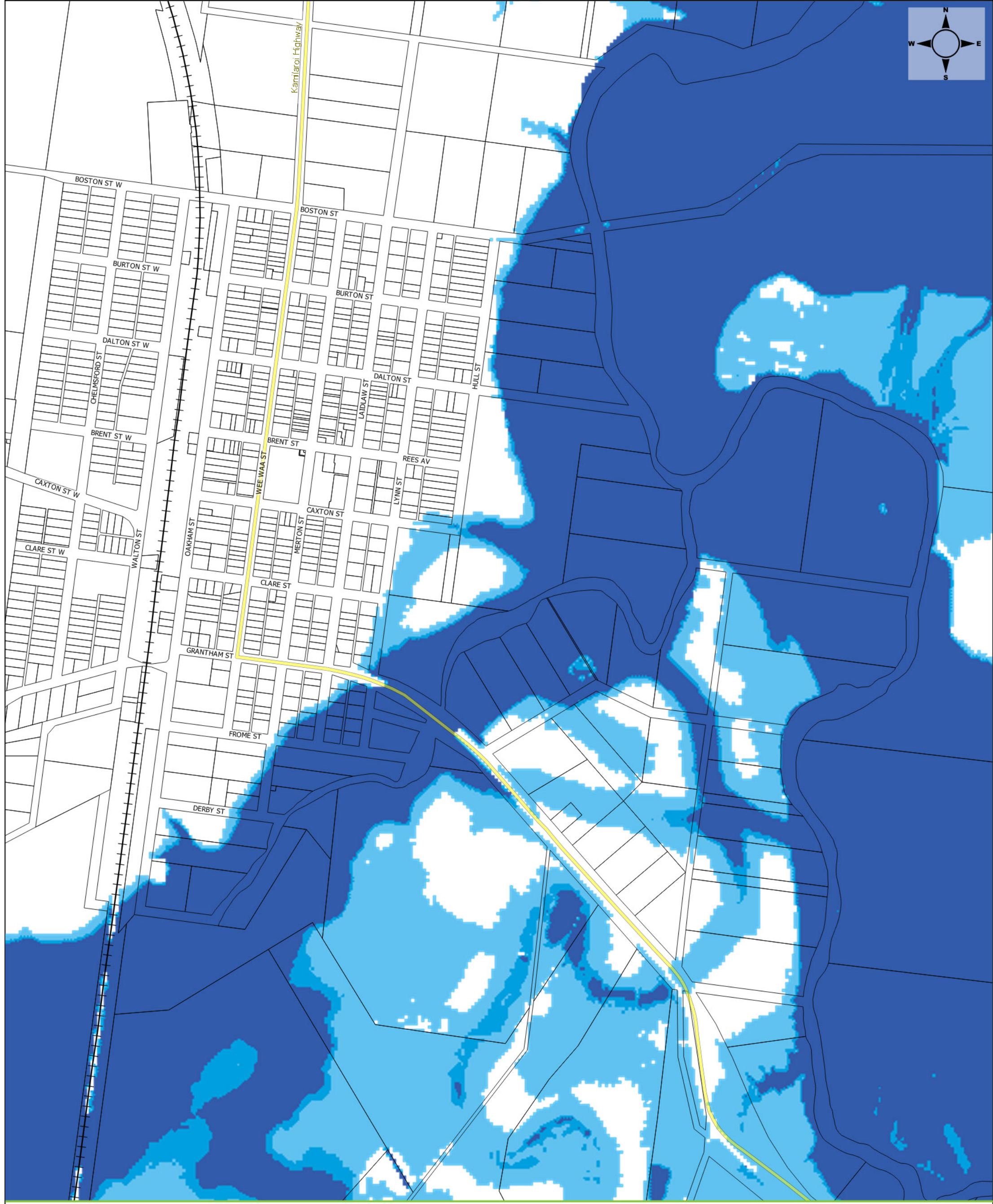


Appendix D - Hazard maps (NSW Floodplain Development Manual)

Figure D 1 - Flood hazard, 5% AEP event _____	114
Figure D 2 - Flood hazard, 2% AEP event _____	115
Figure D 3 - Flood hazard, 1% AEP event _____	116
Figure D 4 - Flood hazard, 0.5% AEP event _____	117
Figure D 5 - Flood hazard, 0.2% AEP event _____	118
Figure D 6 - Flood hazard, PMF event _____	119



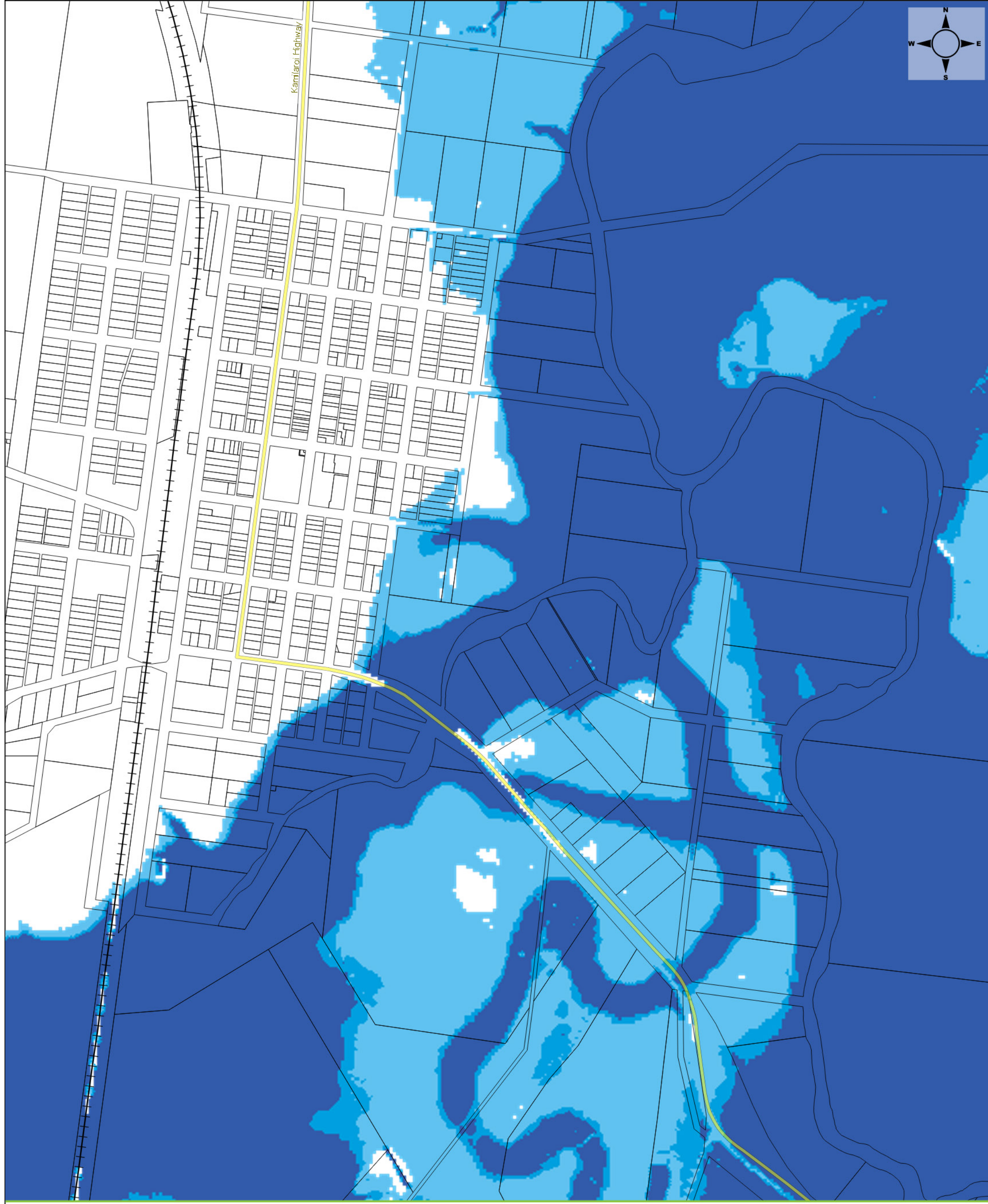
- Legend**
- Kamilaroi Highway
 - Railway
 - Cadastre
- Hazard level**
- Low
 - Intermediate
 - High

Boggabri Flood Study

Figure D.1

Flood hazard map (NSW Floodplain Development Manual)
5% AEP design event

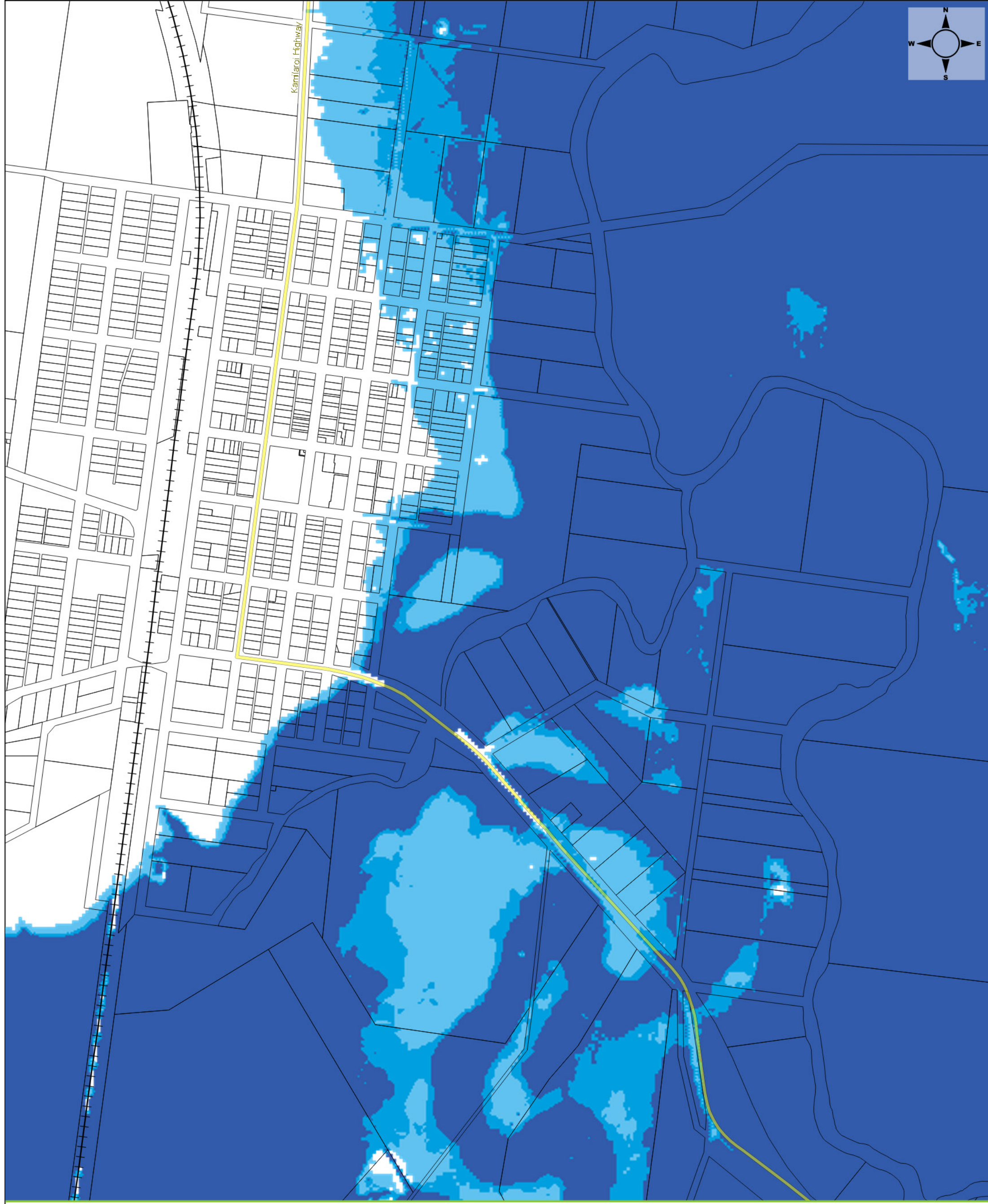




- Legend**
- Kamilaroi Highway
 - Railway
 - Cadastre
- Hazard level**
- Low
 - Intermediate
 - High

Boggabri Flood Study
Figure D.2
Flood hazard map (NSW Floodplain Development Manual)
2% AEP design event





- Legend**
- Kamilaroi Highway
 - Railway
 - Cadastre
- Hazard level**
- Low
 - Intermediate
 - High

Boggabri Flood Study

Figure D.3

Flood hazard map (NSW Floodplain Development Manual)
1% AEP design event

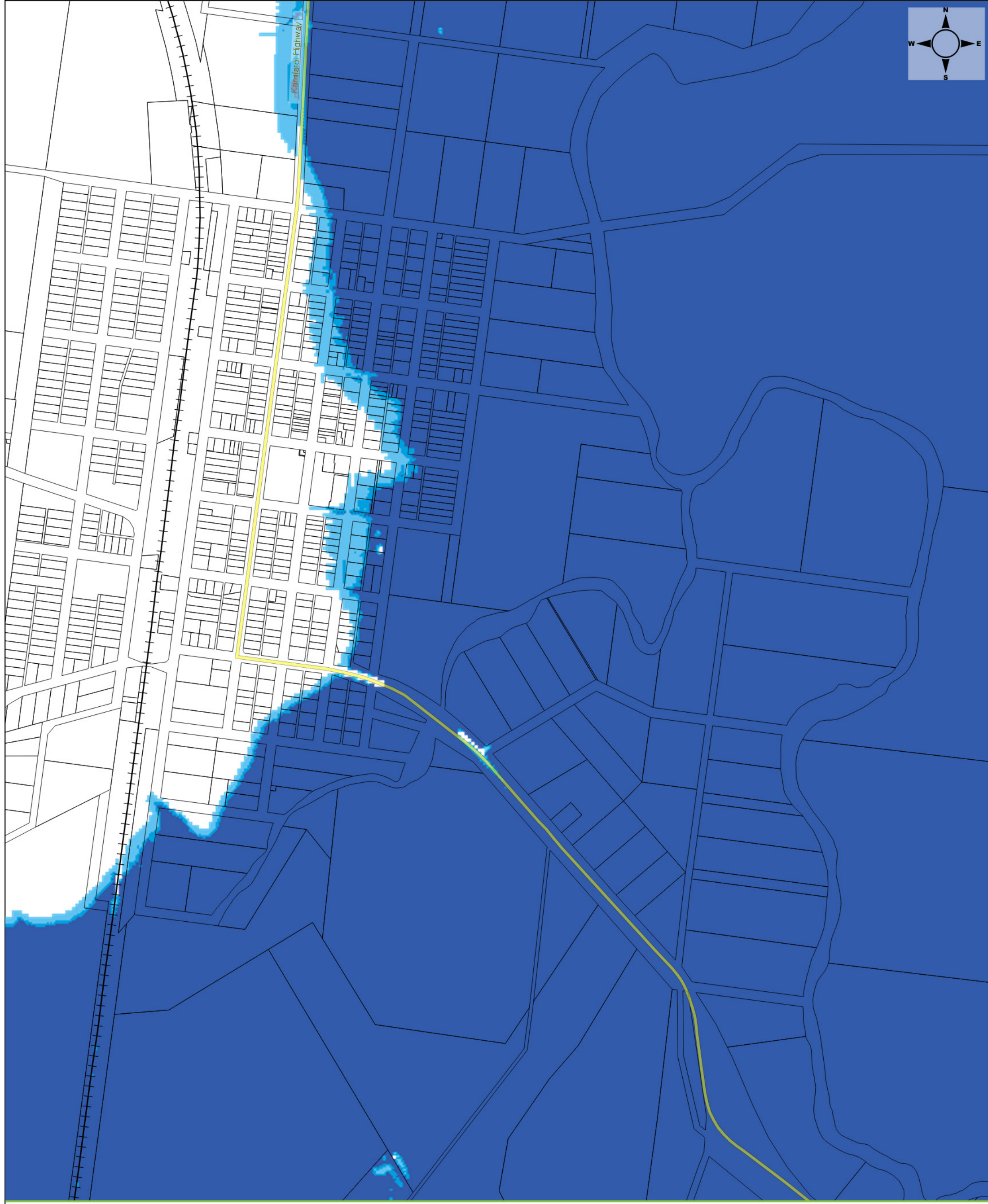




- Legend**
- Kamilaroi Highway
 - Railway
 - Cadastre
- Hazard level**
- Low
 - Intermediate
 - High

Boggabri Flood Study
Figure D.4
Flood hazard map (NSW Floodplain Development Manual)
0.5% AEP design event

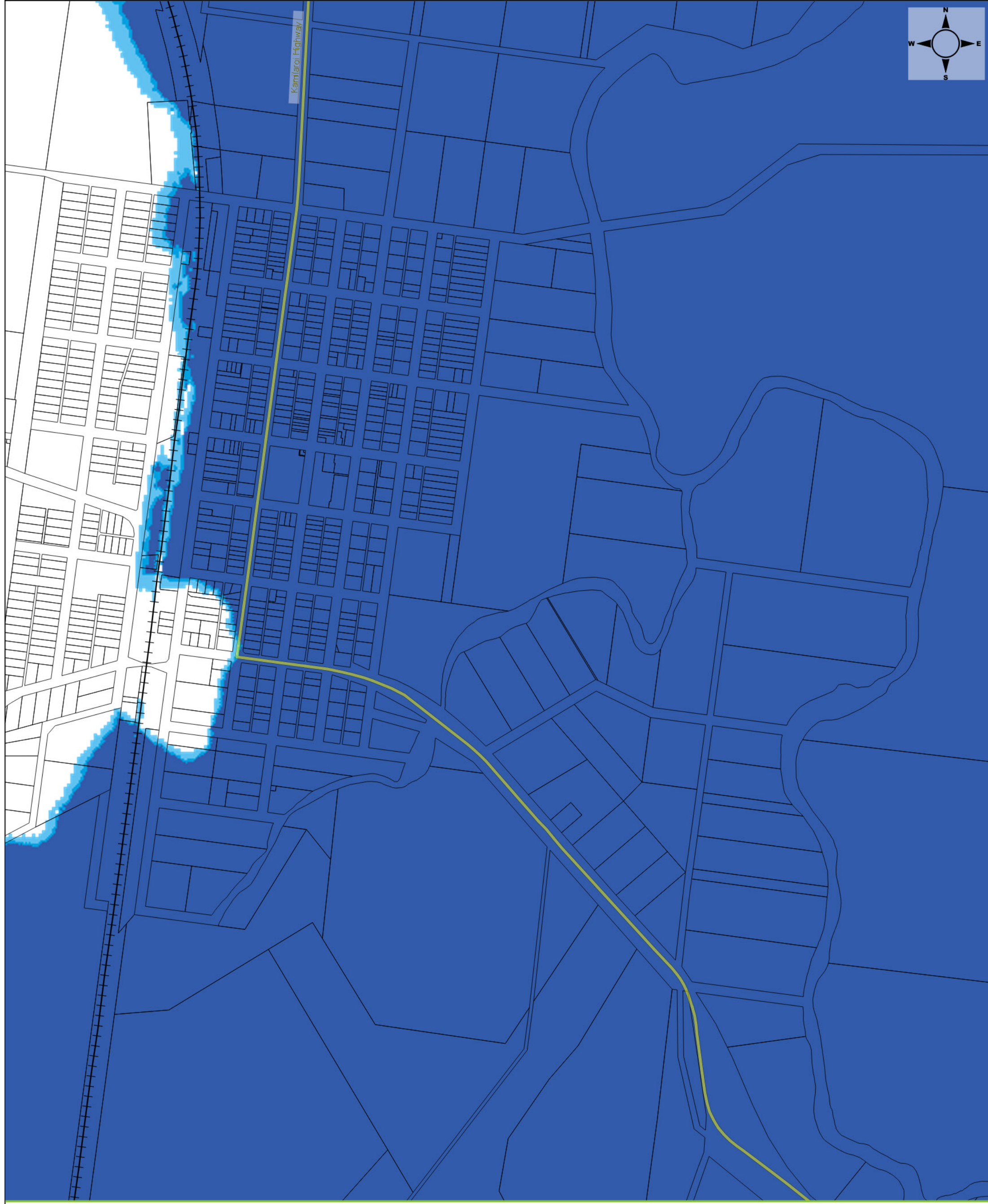




- Legend**
- Kamilaroi Highway
 - Railway
 - Cadastre
- Hazard level**
- Low
 - Intermediate
 - High

Boggabri Flood Study
Figure D.5
Flood hazard map (NSW Floodplain Development Manual)
0.2% AEP design event





- Legend**
- Kamilaroi Highway
 - Railway
 - Cadastre
- Hazard level**
- Low
 - Intermediate
 - High

Boggabri Flood Study

Figure D.6
Flood hazard map (NSW Floodplain Development Manual)
PMF design event

