

Appendix A - Hydrologic model calibration graphs

Figure A 1 - Namoi River at Boggabri (419012), recorded and predicted discharges, February 1997 event _____	90
Figure A 2 - Coxs Creek at Boggabri (419032), recorded and predicted discharges, February 1997 event _____	90
Figure A 3 - Bomera Creek at Tambar-Premier Road (419085), recorded and predicted discharges, February 1997 event _____	91
Figure A 4 - Coxs Creek at Tambar Springs (419033), recorded and predicted discharges, February 1997 event _____	91
Figure A 5 - Bundella Creek at Bundella (419086), recorded and predicted discharges, February 1997 event _____	92
Figure A 6 - Namoi River at Boggabri (419012), recorded and predicted discharges, July 1998 event _____	92
Figure A 7 - Coxs Creek at Boggabri (419032), recorded and predicted discharges, July 1998 event _____	93
Figure A 8 - Bomera Creek at Tambar-Premier Road (419085), recorded and predicted discharges, July 1998 event _____	93
Figure A 9 - Coxs Creek at Tambar Springs (419033), recorded and predicted discharges, July 1998 event _____	94
Figure A 10 - Bundella Creek at Bundella (419086), recorded and predicted discharges, July 1998 event _____	94
Figure A 11 - Namoi River at Boggabri (419012), recorded and predicted discharges, November 2000 event _____	95
Figure A 12 - Coxs Creek at Boggabri (419032), recorded and predicted discharges, November 2000 event _____	95
Figure A 13 - Bomera Creek at Tambar-Premier Road (419085), recorded and predicted discharges, November 2000 event _____	96
Figure A 14 - Coxs Creek at Tambar Springs (419033), recorded and predicted discharges, November 2000 event _____	96
Figure A 15 - Bundella Creek at Bundella (419086), recorded and predicted discharges, November 2000 event _____	97

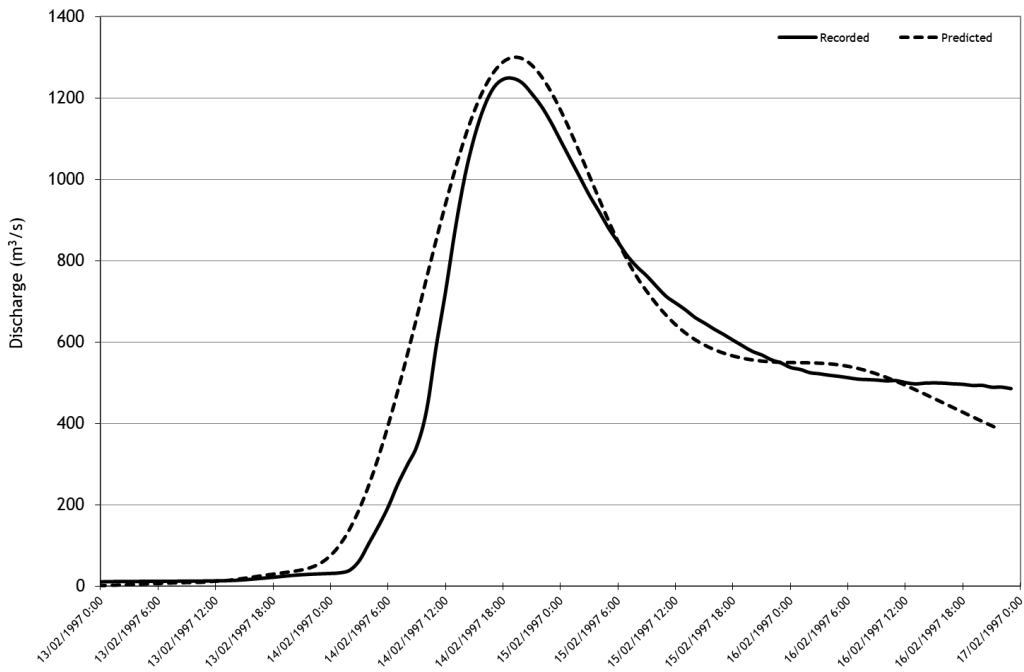


Figure A 1- Namoi River at Boggabri (419012), recorded and predicted discharges, February 1997 event

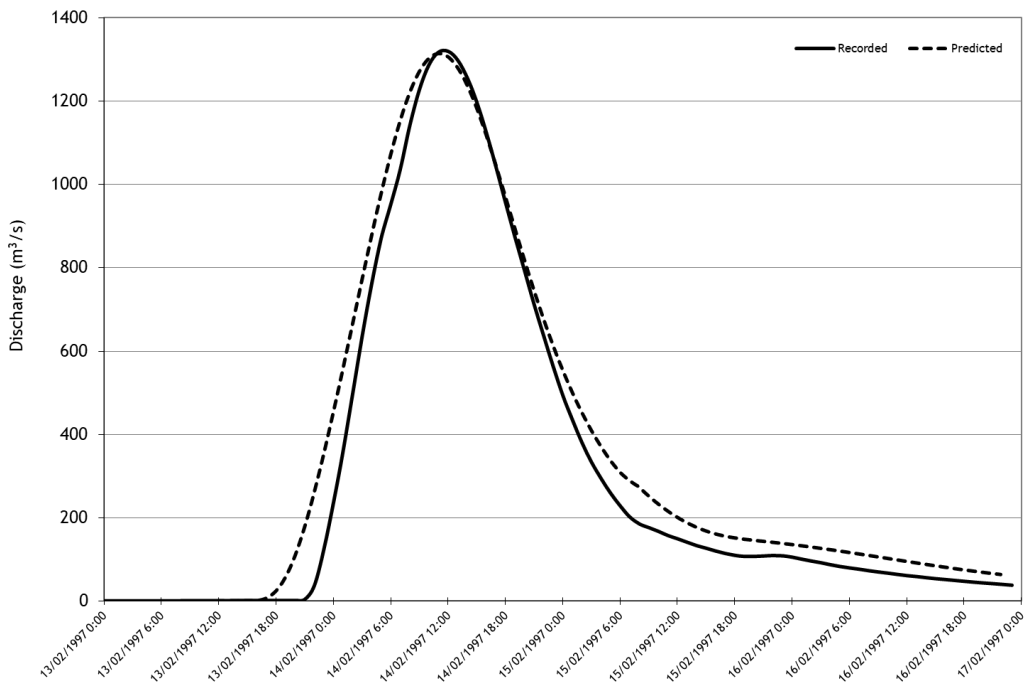


Figure A 2 - Coxs Creek at Boggabri (419032), recorded and predicted discharges, February 1997 event

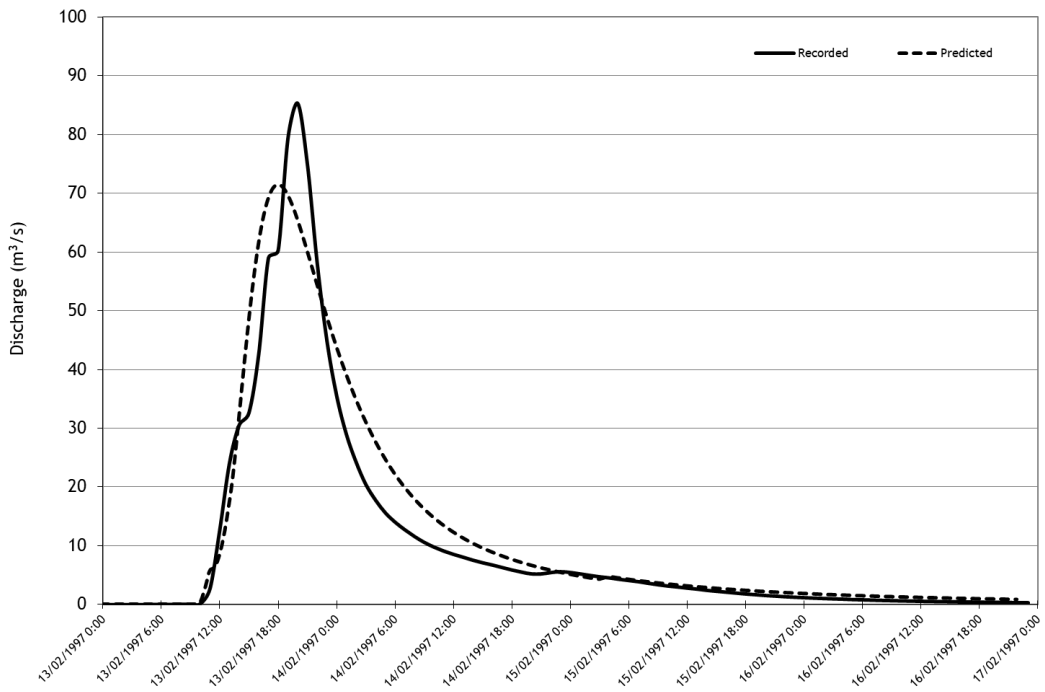


Figure A 3 - Bamera Creek at Tambar-Premer Road (419085), recorded and predicted discharges, February 1997 event

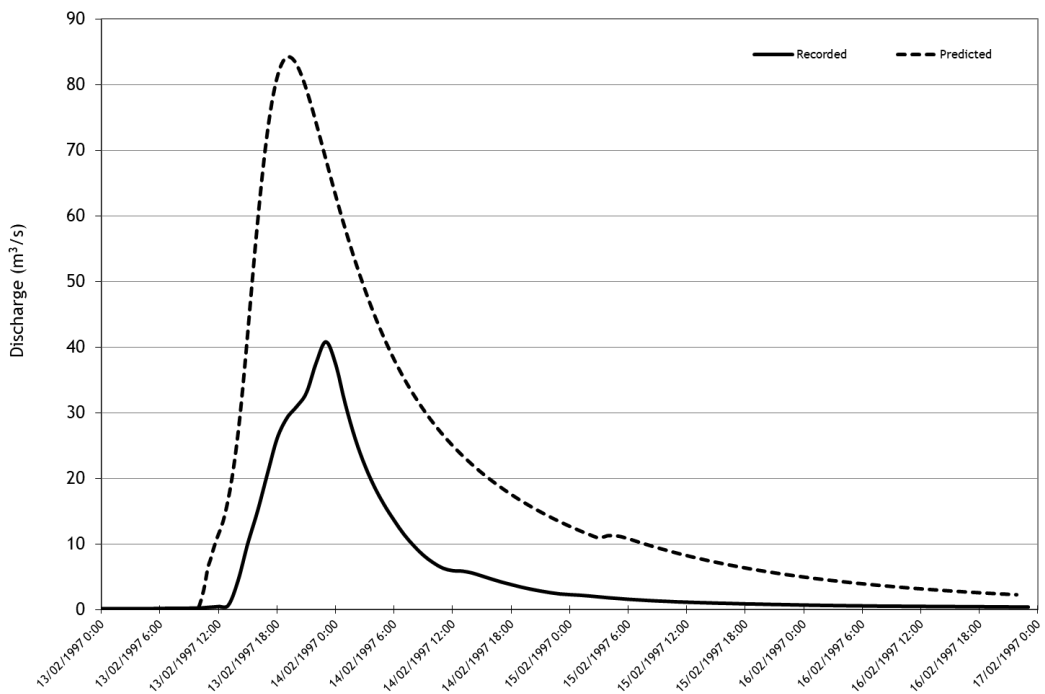


Figure A 4 - Coxs Creek at Tambar Springs (419033), recorded and predicted discharges, February 1997 event

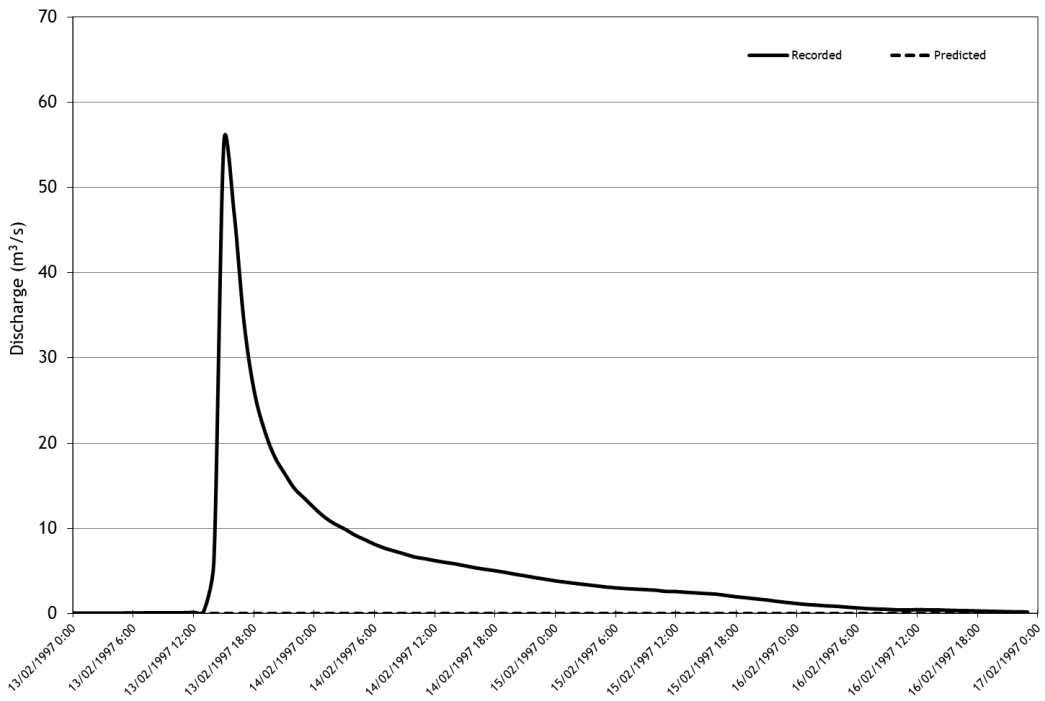


Figure A 5 - Bundella Creek at Bundella (419086), recorded and predicted discharges, February 1997 event

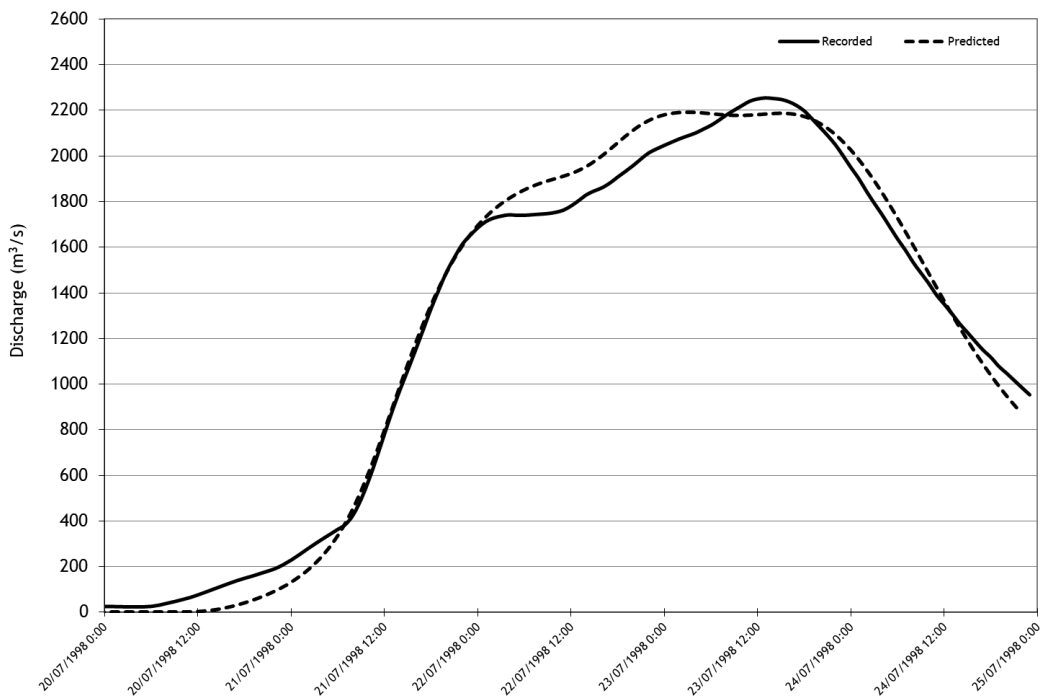


Figure A 6 - Namoi River at Boggabri (419012), recorded and predicted discharges, July 1998 event

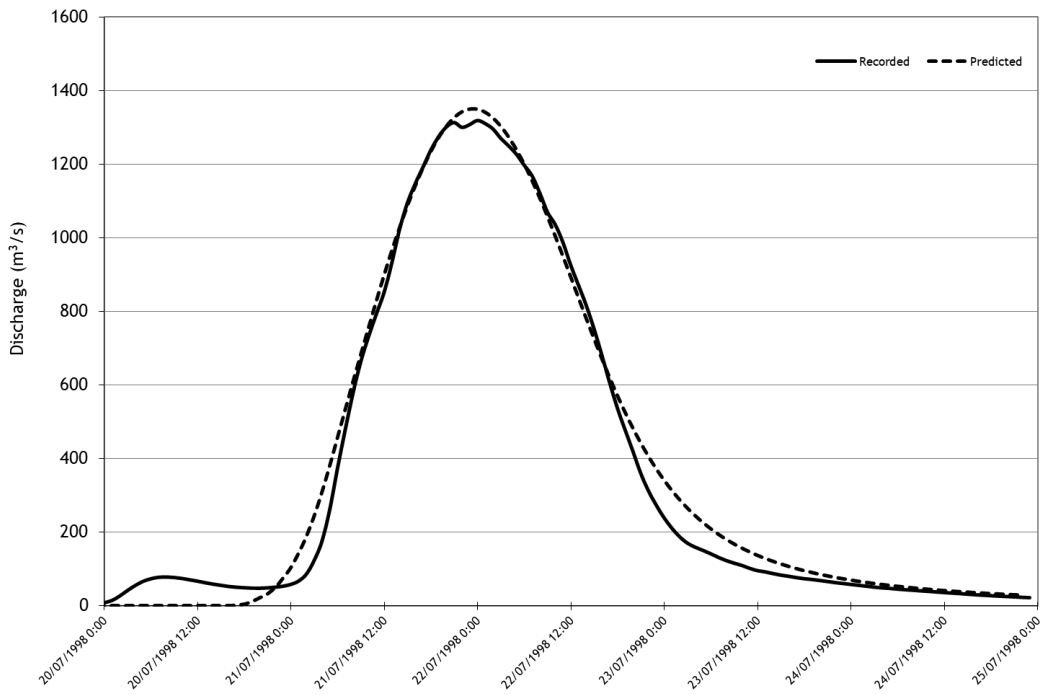


Figure A 7 - Coxs Creek at Boggabri (419032), recorded and predicted discharges, July 1998 event

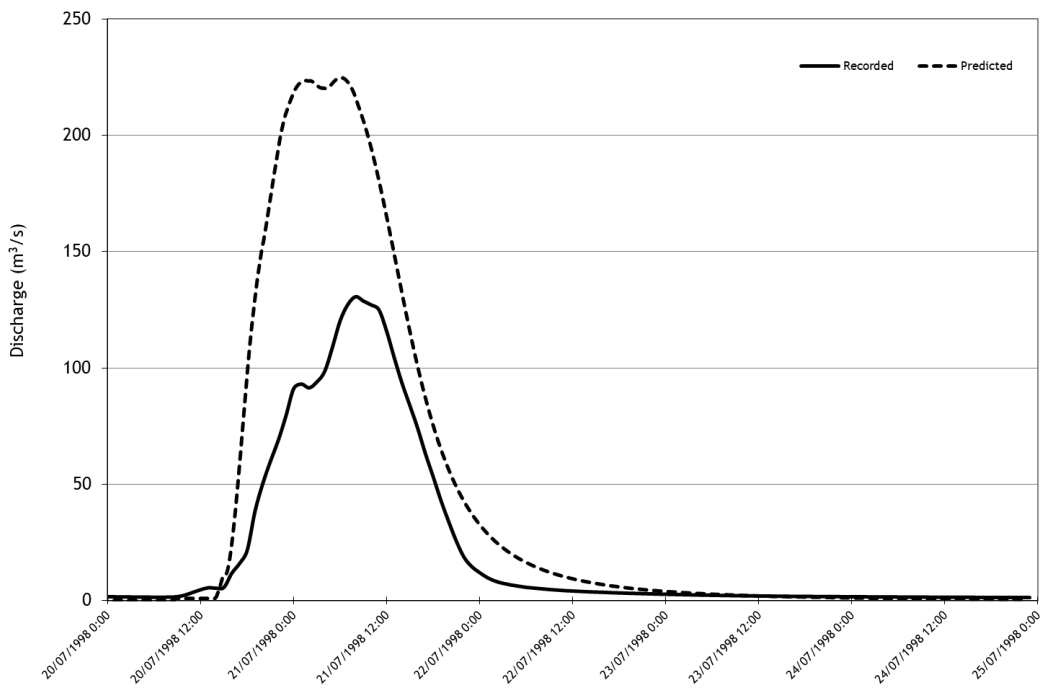


Figure A 8 - Bomera Creek at Tambar-Premier Road (419085), recorded and predicted discharges, July 1998 event

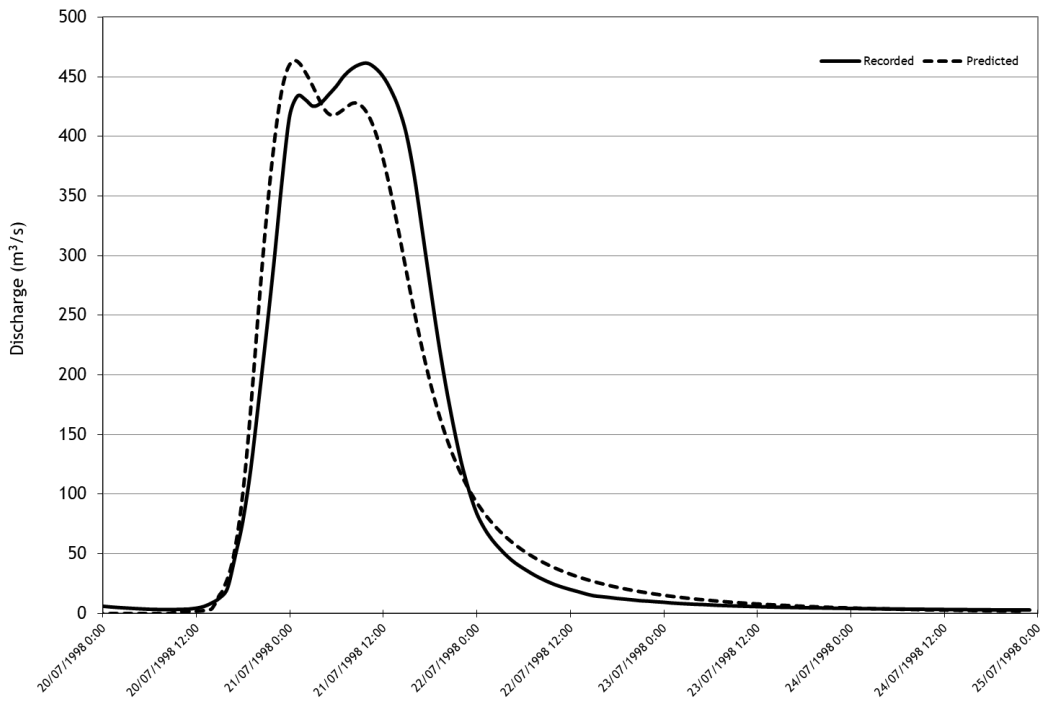


Figure A 9 - Coxs Creek at Tambar Springs (419033), recorded and predicted discharges, July 1998 event

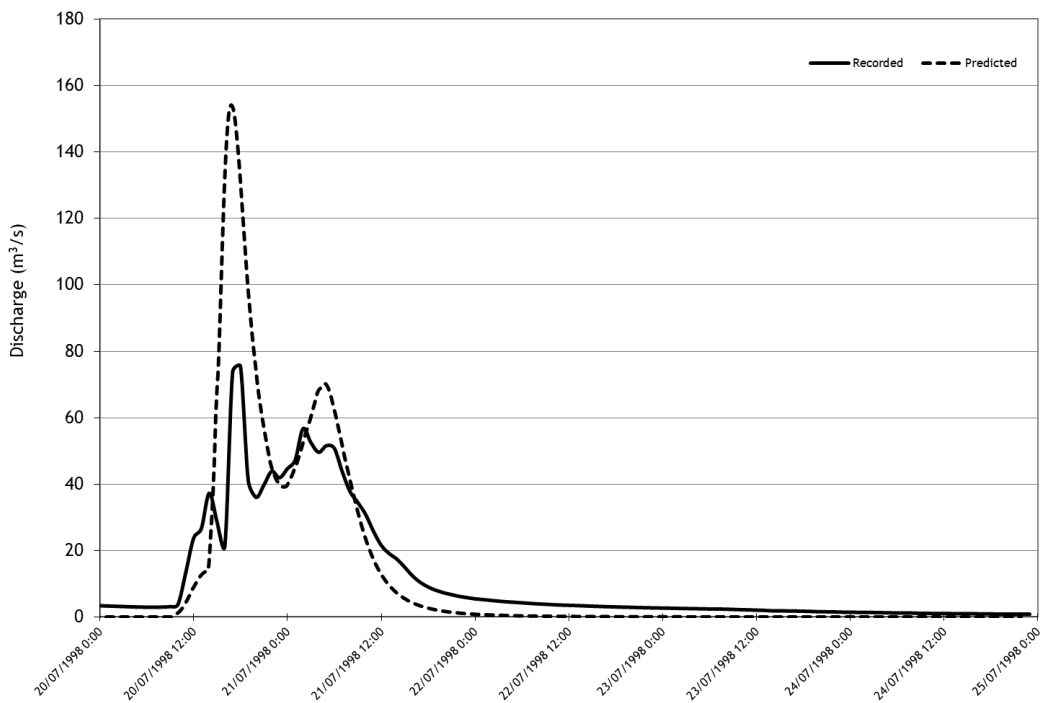


Figure A 10 - Bundella Creek at Bundella (419086), recorded and predicted discharges, July 1998 event

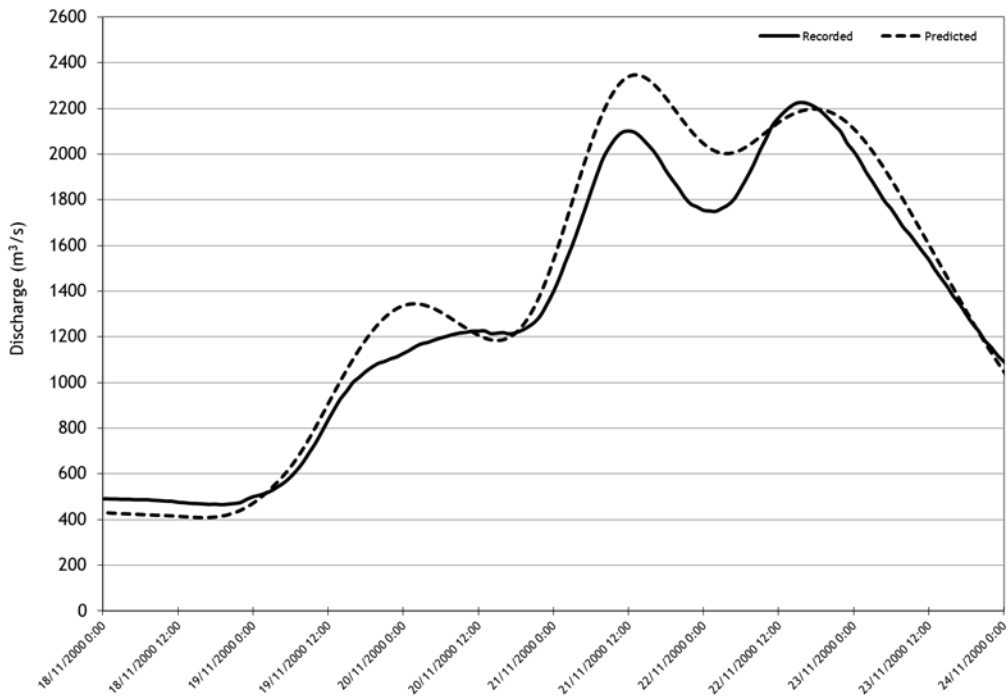


Figure A 11 - Namoi River at Boggabri (419012), recorded and predicted discharges, November 2000 event

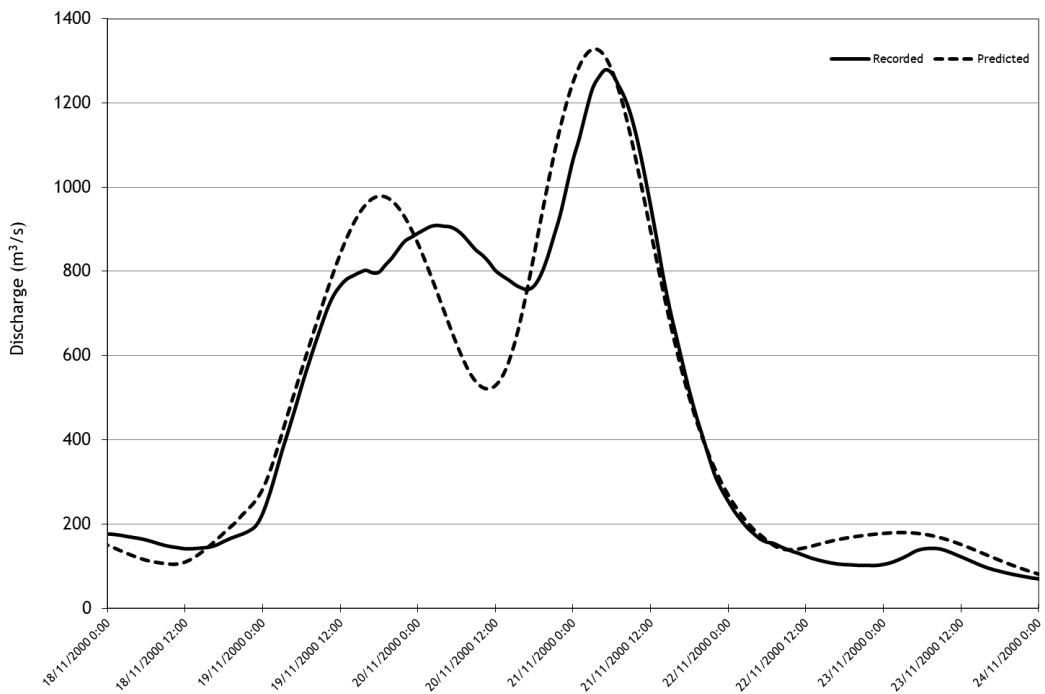


Figure A 12 - Cocks Creek at Boggabri (419032), recorded and predicted discharges, November 2000 event

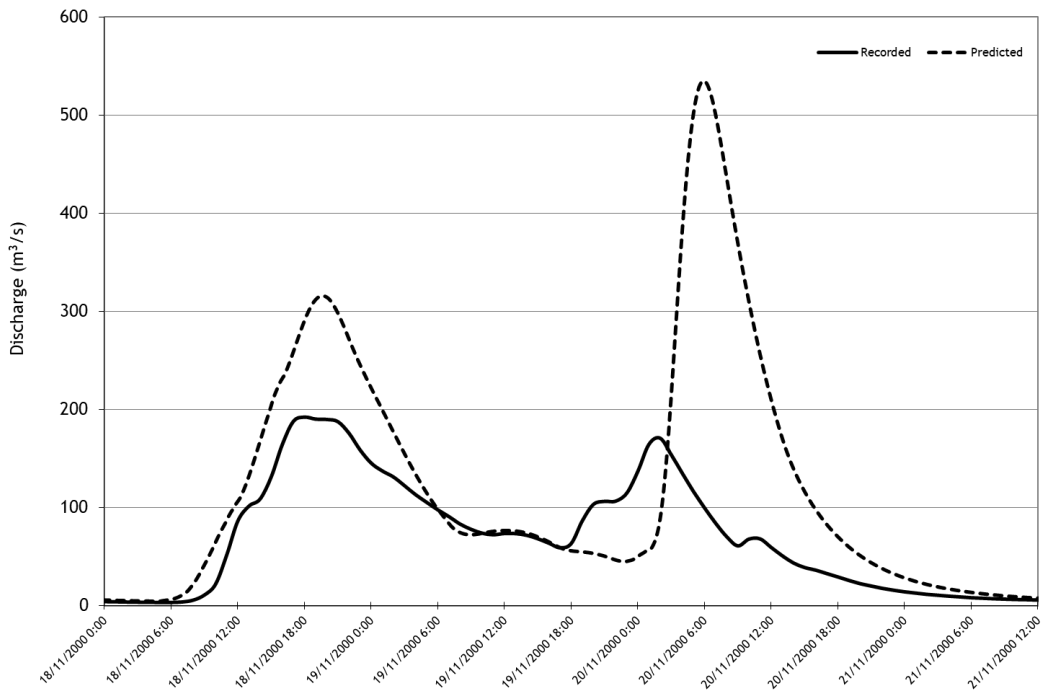


Figure A 13 - Bomera Creek at Tambar-Premer Road (419085), recorded and predicted discharges, November 2000 event

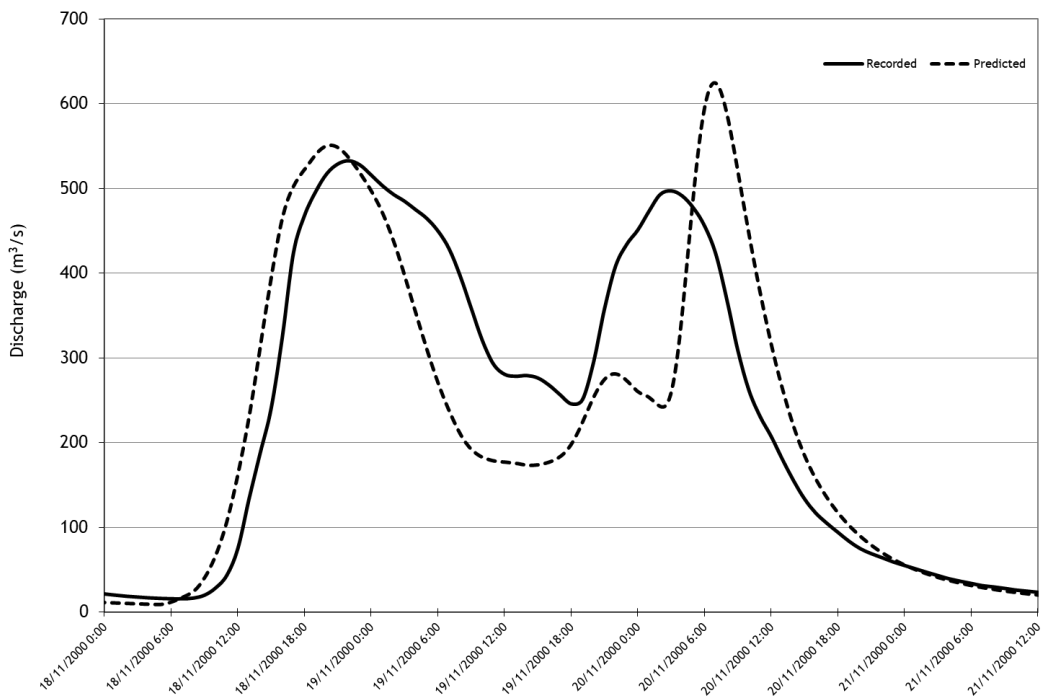


Figure A 14 - Coxs Creek at Tambar Springs (419033), recorded and predicted discharges, November 2000 event

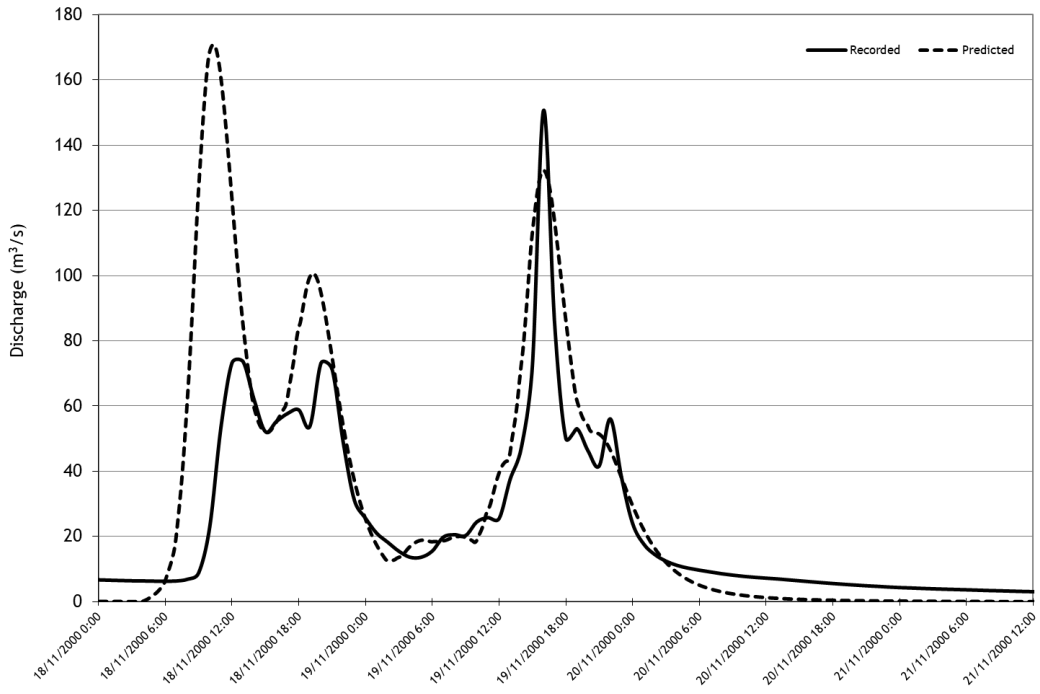


Figure A 15 - Bundella Creek at Bundella (419086), recorded and predicted discharges, November 2000 event